

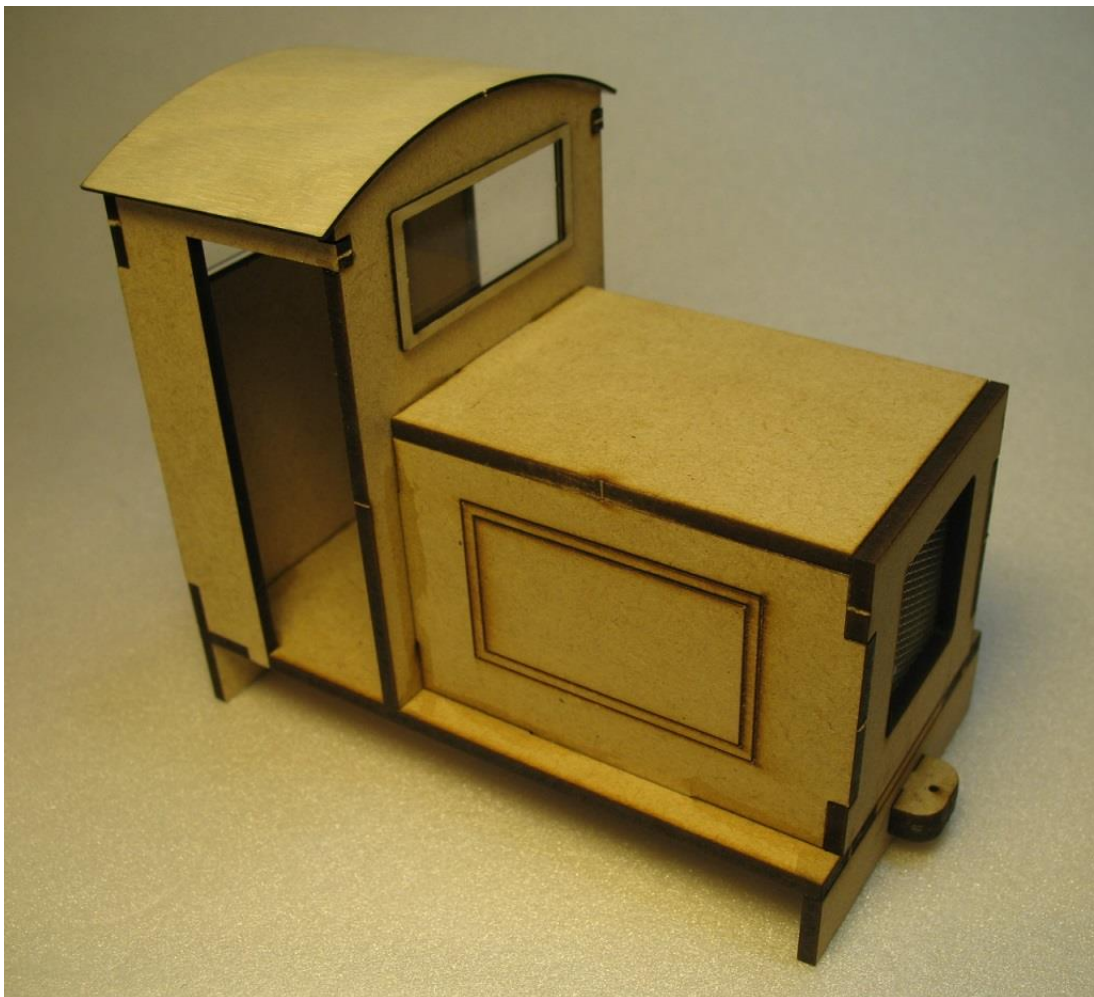
# Assembly Instructions for the Houstoun Gate Locomotive Works Loco Body Kit (LB1)

It is suggested that you read these instructions through before commencing construction.

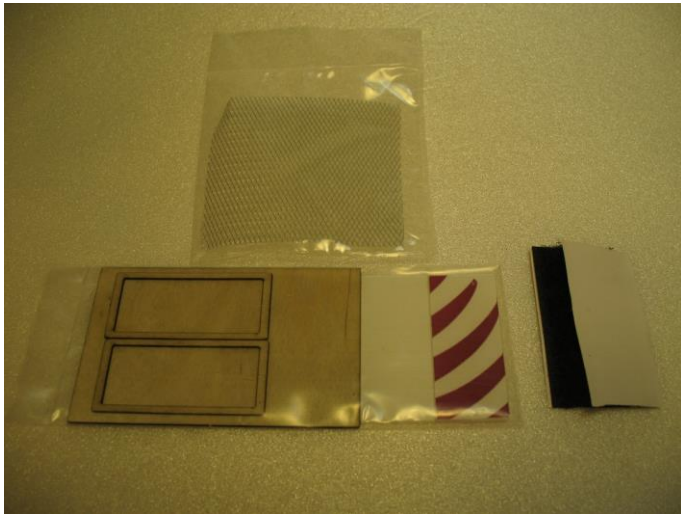
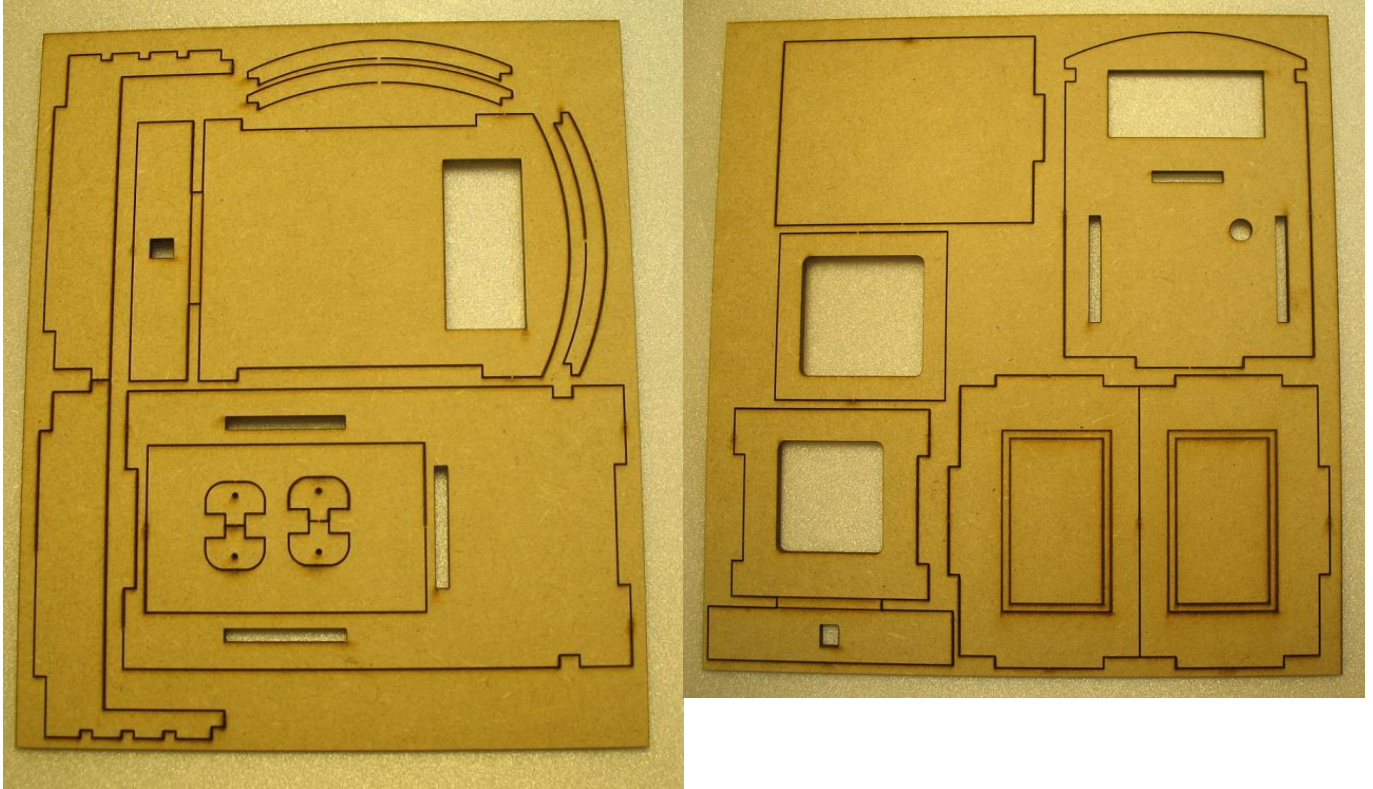
A minimum of tools are needed to assemble the kit. Sandpaper and sanding block, some strong rubber bands or weights to hold parts in place while the glue dries.

This kit requires glue and paint to complete. It can be built entirely with PVA (exterior type) or aliphatic resin, except for the grille mesh which is best attached with epoxy resin. A favourite glue is Titebond 3 aliphatic. Excess glue can be wiped away with a damp rag.

MDF is not moisture proof and the model should therefore be painted or varnished before use. First apply a sealer/primer - MDF sealer, thinned PVA or grey automotive primer will all do the job. The cut edges may need more than one application of primer to seal them. Cans of automotive spray paint work well and give a good finish. If brush painting then use acrylic or enamel paint.



## Kit Contents



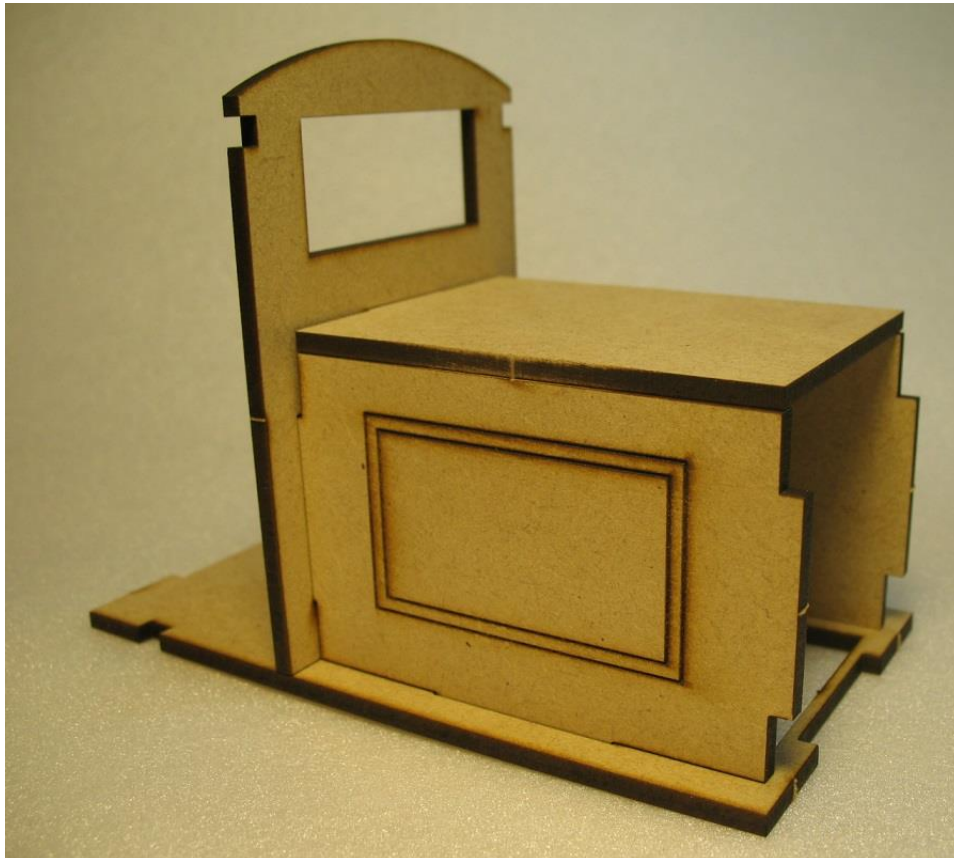
### **HGLW Loco Body Kit (LB1)**

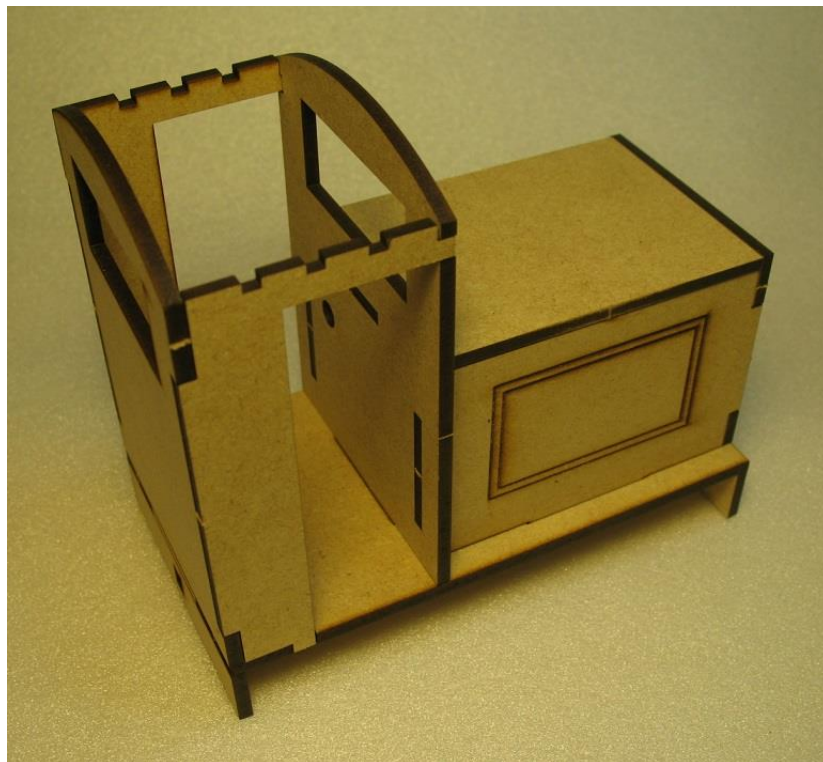
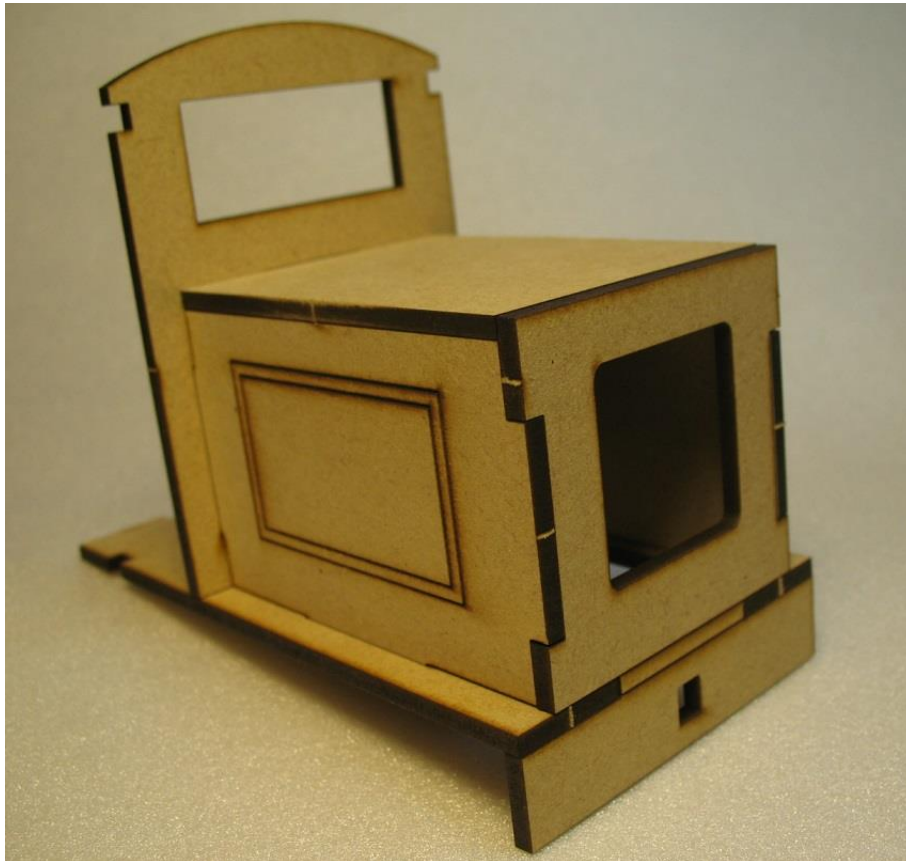
- 2 x MDF cuts
- 1 x Ply Roof
- 2 x Ply Window Frame
- 2 x Window
- 1 x Mesh
- 1 x velcro

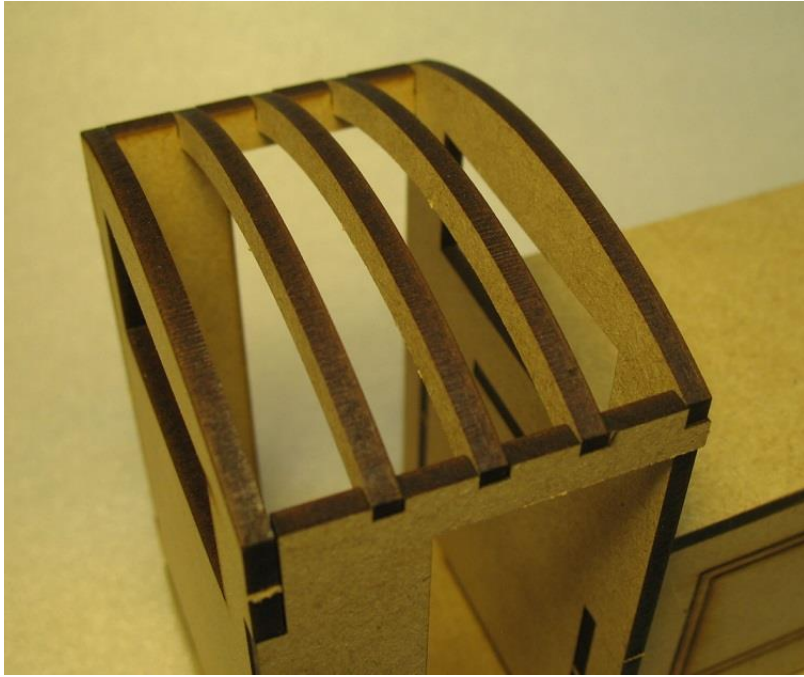
## Assembly

Carefully separate the parts from their sheets. Wriggling them lightly is normally enough to break the retaining tab. You can also cut the tabs with a sharp modelling knife. Sand the retaining tabs away on all parts before beginning assembly.

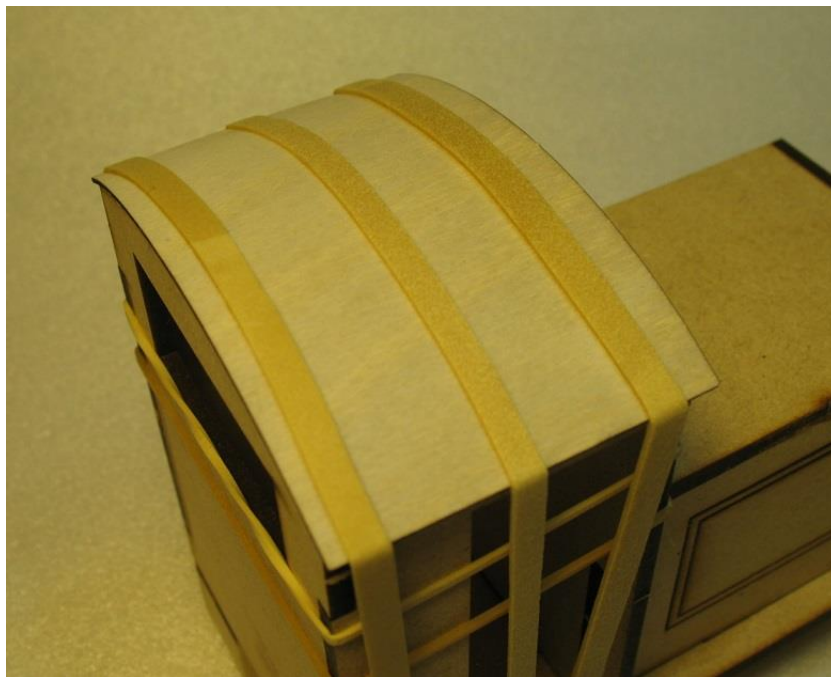
Glue the parts together in the sequence shown in the pictures below. You can dry assemble the loco first to get an idea of how it goes together. If you intend to paint the inside of the cab then it is a good idea to do so before you add the roof ribs.







Be generous with the glue when attaching the roof. Hold it in position with strong rubber bands until the glue has set.



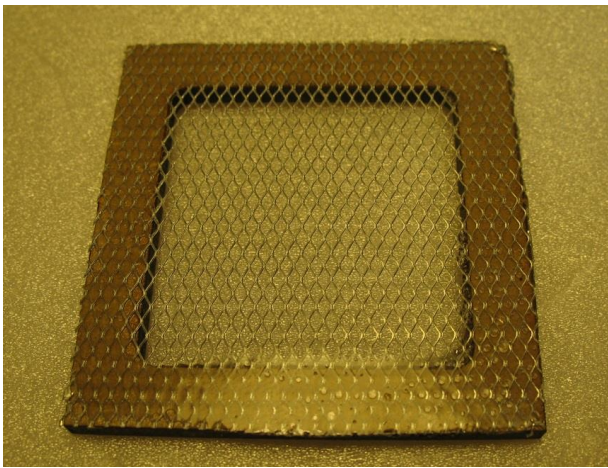
Glue the buffets in place



Glue the window frames in place. Do not fit the perspex glazing until the model has been painted.



Glue the aluminium mesh onto the supplied frame. Epoxy is the best glue for this. Once the glue is set trim off the excess mesh. Mount it inside the engine cover once the loco has been painted.



Stick one half of the velcro to the inside top of the engine housing. The other half is stuck to the battery clip (clip supplied with our chassis kit)



Give the loco a good sanding before painting it. Some people prefer to round off the top edges of the bonnet before painting. This is a simple kit but you may want to personalise you loco with grab handles, exhaust pipe, driver etc. The limit is your imagination!

If you would like to send pictures of your finished loco to [pictures@hglw.co.uk](mailto:pictures@hglw.co.uk) we may include them in a gallery on the website.

The loco is designed as a push fit on the HGLW electric chassis, either 2-wheel or 4-wheel drive. There is a hole in the cab bulkhead to accommodate the switch from the chassis kit.



We hope you enjoy your kit, but if you have any problem with construction email our technical help line at [techhelp@hglw.co.uk](mailto:techhelp@hglw.co.uk)